

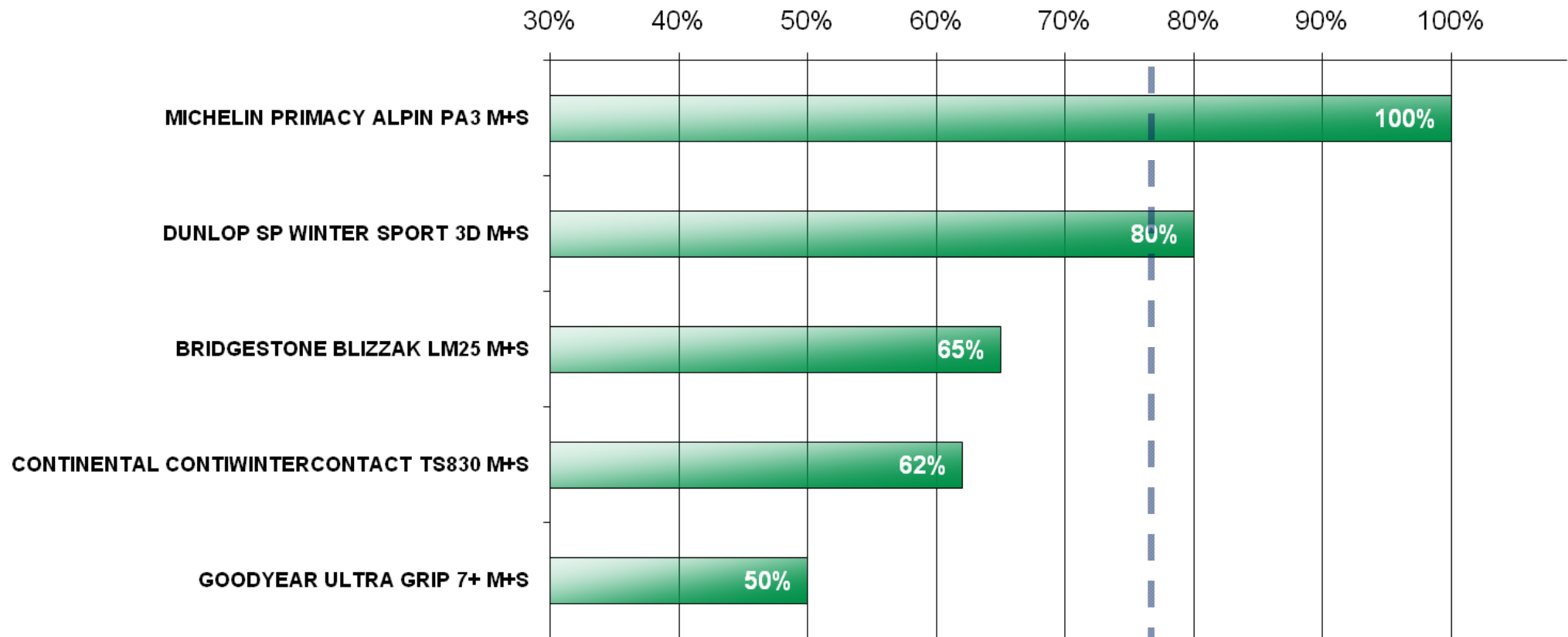
# TIRE LONGEVITY AND FUEL CONSUMPTION TESTS

## RESULT OF TIRE SEGMENT 205/55 R 16 H



# TIRE LONGEVITY AND FUEL CONSUMPTION TESTS

## RESULT OF TIRE SEGMENT 205/55 R 16 H : LONGEVITY TEST

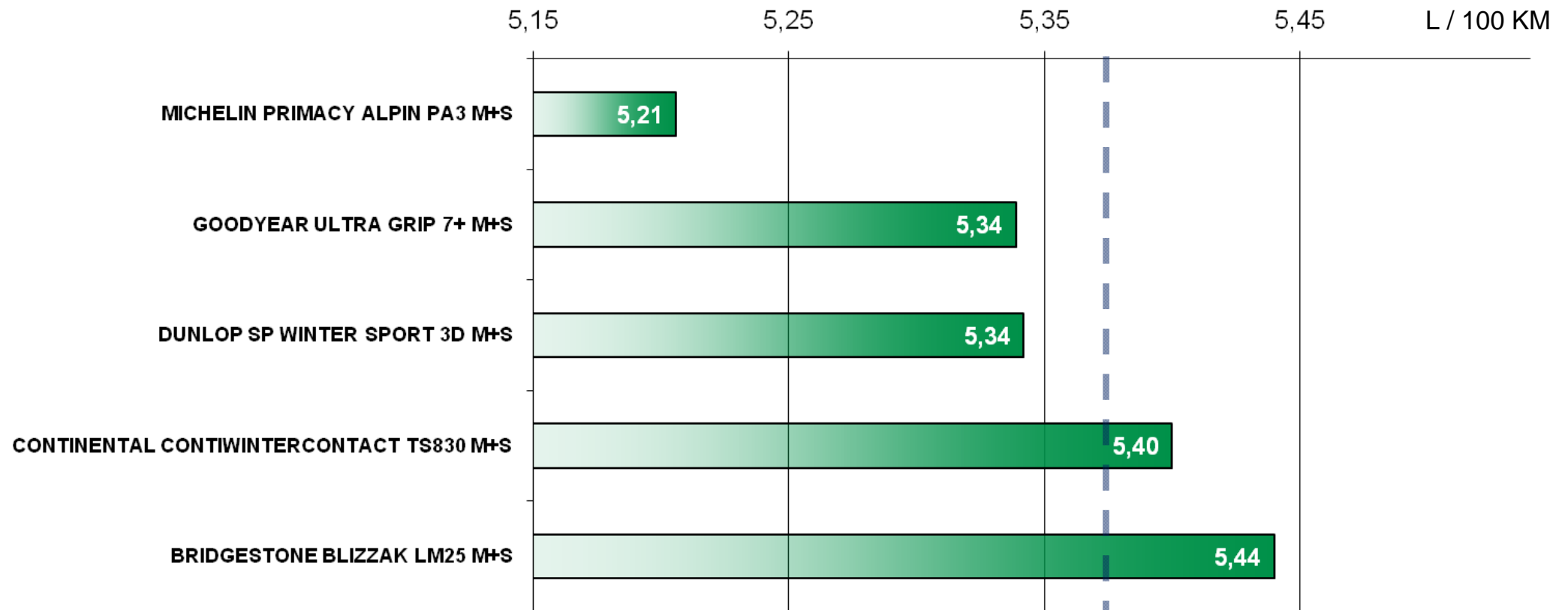


— — — Arithmetic average of tested tires

Treadlife extrapolation (after a test mileage of 12 000 km) based on the most worn groove on both front tires – Base 100

# TIRE LONGEVITY AND FUEL CONSUMPTION TESTS

## RESULT OF TIRE SEGMENT 205/55 R 16 H : FUEL CONSUMPTION TEST



— — — Arithmetic average of tested tires

Fuel consumption calculation determined from volume consumed by each set of tires during 12 000 km driven for the test.

## METHODOLOGY - KEY POINTS

### ➤ SUPPLYING OF TIRES :

Purchase of all the tires on the Open European Replacement Market at the same time.

### ➤ LONGEVITY CALCULATION :

Wear limit for all measurement points : 1.6 mm.

Use of linear regression statistical formula after 12 000 km of the test.

### ➤ LONGEVITY RESULT :

Calculation of average results per front axle, and per set.

100 representing the best tire performance.

### ➤ REFUELING :

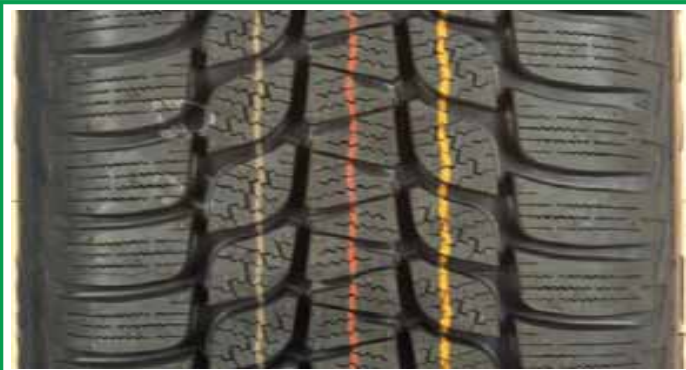
Refueling is done, for all the vehicles, after each driving shift with the same trained operator, the same petrol pump and the same position of the vehicle.

### ➤ CONSUMPTION RESULT :

Fuel consumption calculated by the volumes measured at each refueling during the 12 000 km driven for the test.

# TIRE LONGEVITY AND FUEL CONSUMPTION TESTS

## TESTED TIRES - 205/55 R 16 H



**BRIDGESTONE**  
**BLIZZAK LM25 M+S**



**CONTINENTAL**  
**CONTIWINTERCONTACT TS830 M+S**



**DUNLOP**  
**SP WINTER SPORT 3D M+S**



**GOODYEAR**  
**ULTRA GRIP 7+ M+S**



**MICHELIN**  
**PRIMACY ALPIN PA3 M+S**

# TIRE LONGEVITY AND FUEL CONSUMPTION TESTS

## TEST VEHICLES CHARACTERISTICS - 205/55 R 16 H



**VEHICLE TYPE : VOLKSWAGEN GOLF V - 5 doors**

**ENGINE TYPE : 4 cyl. 1.9 l. TDI.**

**MAX. ENGINE POWER : 105 hp / 77 kW**

**DRIVE CONCEPT : front**

**MAX. TORQUE : 255 Nm at 1 900 rpm.**

**GEARBOX : 5-speed manual**

**TEST WEIGHT : 1 500 kg**