



Automotive

---

**Choose certainty.  
Add value.**



## Wet Braking Performance

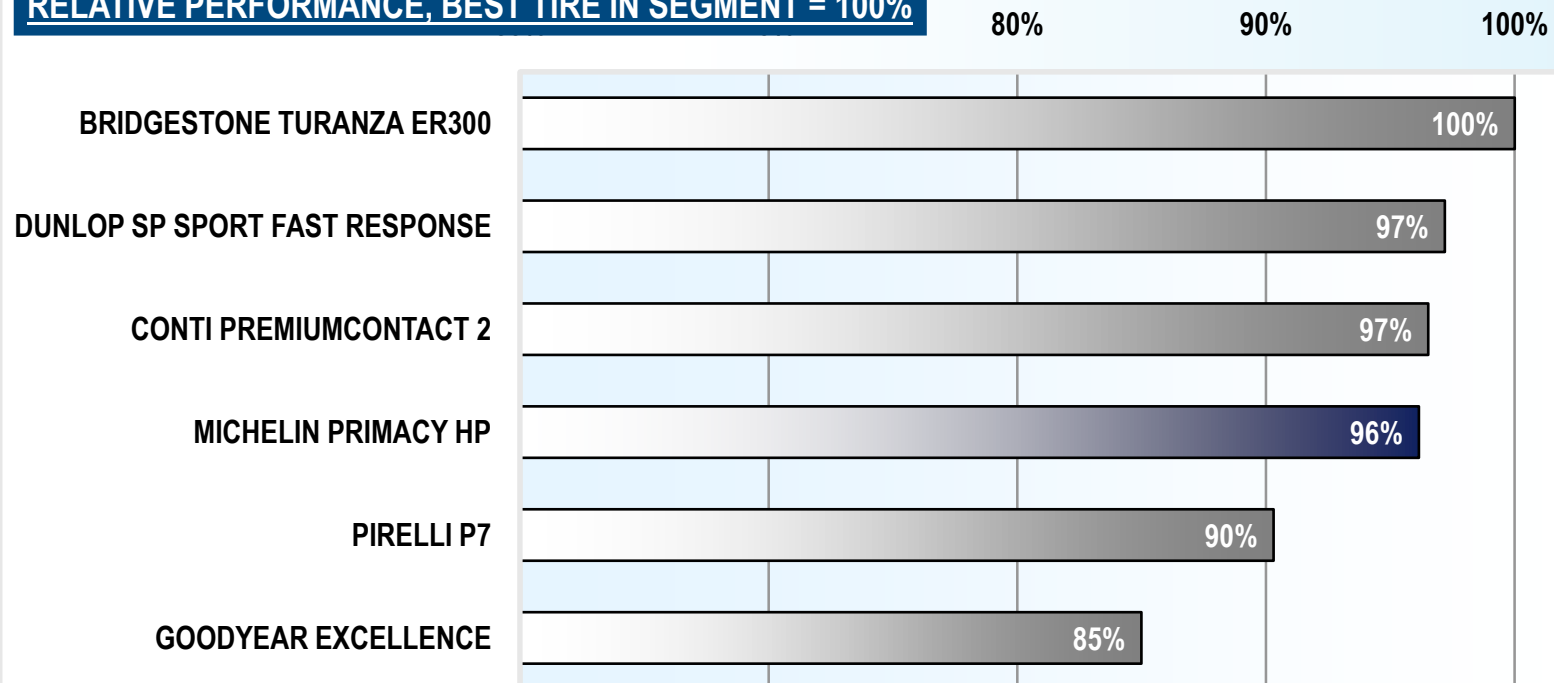
---

TÜV SÜD Automotive Tire Test 2009 - Size 225/55 R16 W

## Test Results

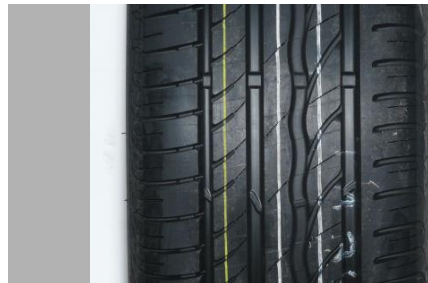
### 225/55 R16 W: Wet Braking Performance

**TIRE SEGMENT 225/55 R16 - WET BRAKING**  
**RELATIVE PERFORMANCE, BEST TIRE IN SEGMENT = 100%**

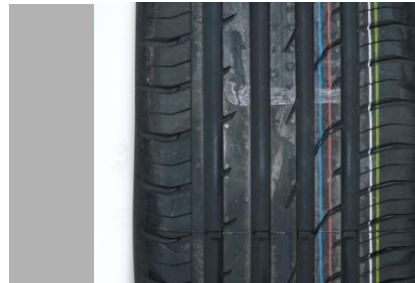


## Test Tires

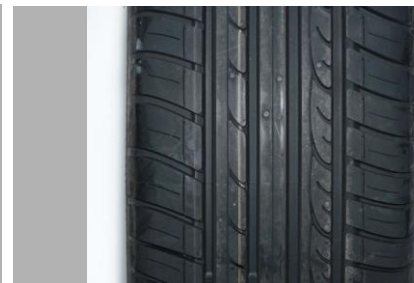
### Summer Tires 225/55 R16 95 W



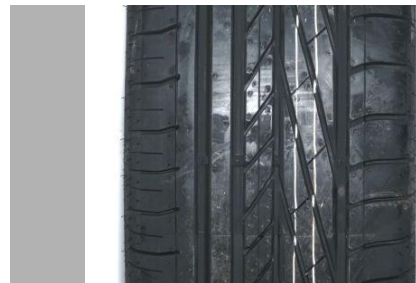
**BRIDGESTONE TURANZA ER300**



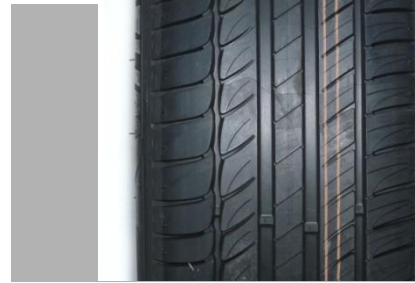
**CONTI PREMIUMCONTACT 2**



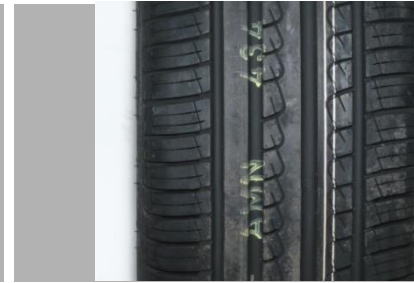
**DUNLOP SP FAST RESPONSE**



**GOODYEAR EXCELLENCE**



**MICHELIN PRIMACY HP**



**PIRELLI P7**

## Test Details

### Key Points Wet Braking Test

- Test Location: ATP Papenburg (D)
- Test surface: artificially rained asphalt track, temperature > 15°C
- Test Vehicle: Audi A4 2.0 TDI
- Speed range: 80 – 20 km/h, ABS braking
- Results show % evaluation of the deceleration performance; the best tire of a test segment represents 100%
- All test tires are purchased on the open market by TÜV SÜD