



Automotive

**Choose certainty.
Add value.**



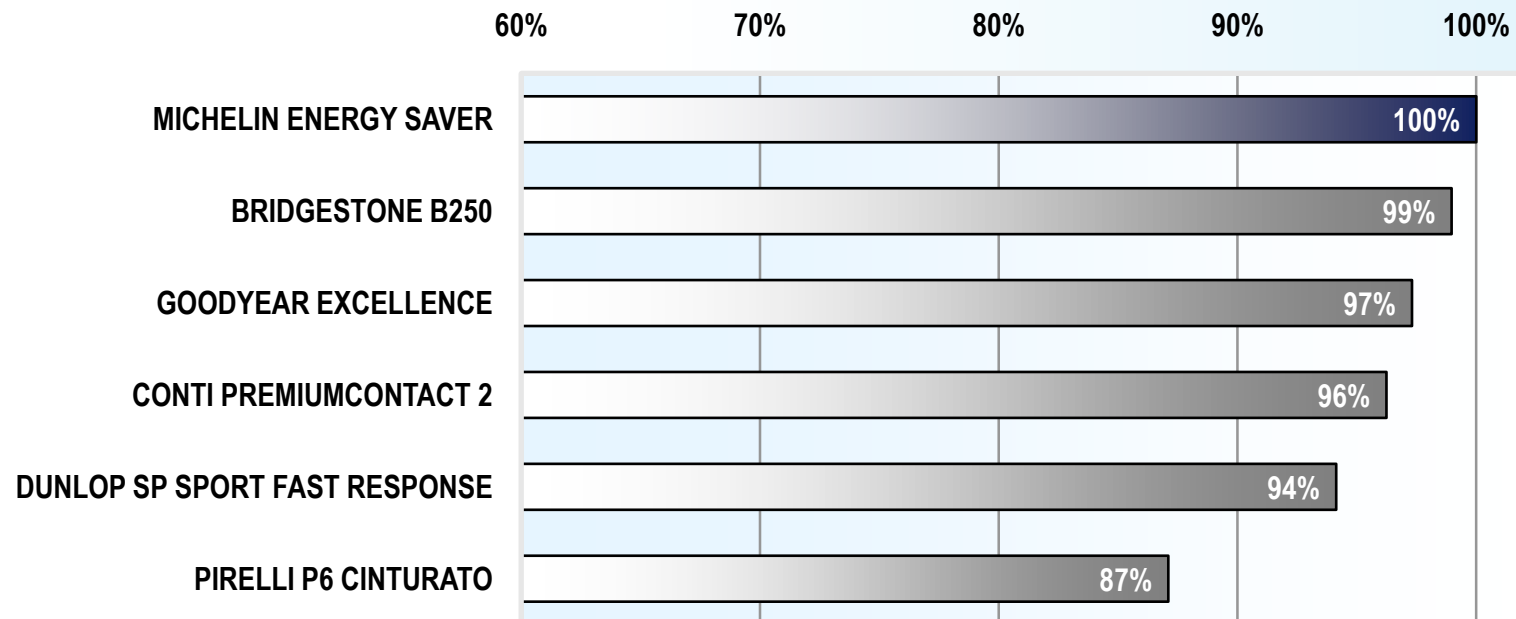
Wet Braking Performance

TÜV SÜD Automotive Tire Test 2009 - Size 195/65 R15 H

Test Results

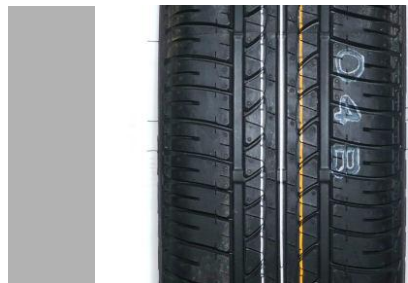
195/65 R15 H: Wet Braking Performance

TIRE SEGMENT 195/65 R15 - WET BRAKING
RELATIVE PERFORMANCE, BEST TIRE IN SEGMENT = 100%

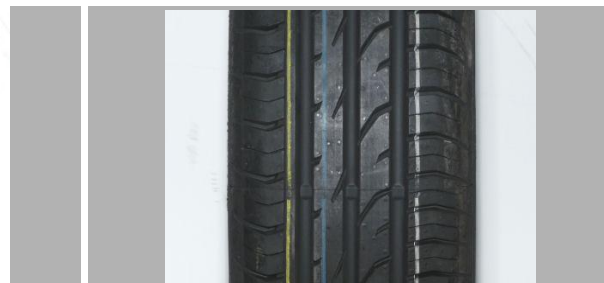


Test Tires

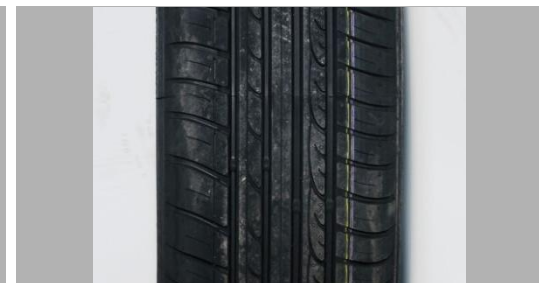
Summer Tires 195/65 R 15 91 H



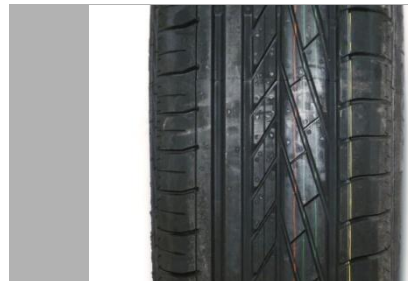
BRIDGESTONE B250



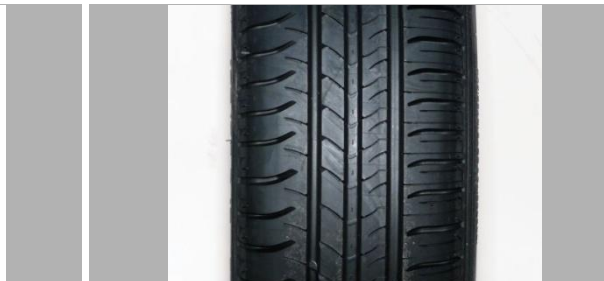
CONTI PREMIUMCONTACT 2



DUNLOP SP FAST RESPONSE



GOODYEAR EXCELLENCE



MICHELIN ENERGY SAVER



PIRELLI P6 CINTURATO

Test Details

Key Points Wet Braking Test

- Test Location: ATP Papenburg (D)
- Test surface: artificially rained asphalt track, temperature > 15°C
- Test Vehicle: VW Golf VI 2.0 TDI
- Speed range: 80 – 20 km/h, ABS braking
- Results show % evaluation of the deceleration performance; the best tire of a test segment represents 100%
- All test tires are purchased on the open market by TÜV SÜD